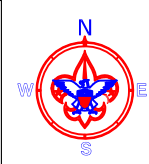
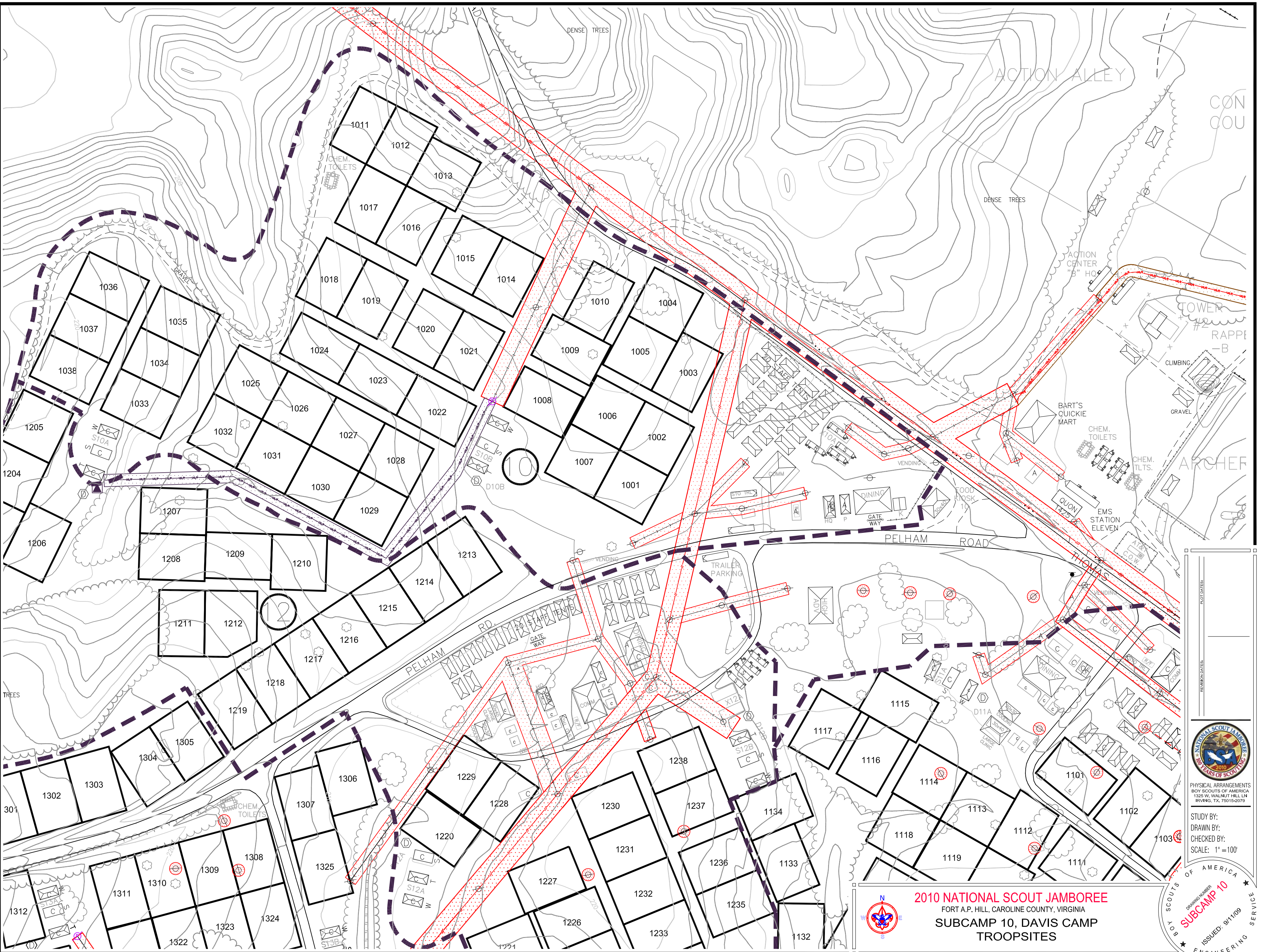



G:\Jamboree Drawings\Sites\Subcamps\bsj_sub_comps_subcamps.dwg PLOT DATE: 9/28/09



2010 NATIONAL SCOUT JAMBOREE
FORT A.P. HILL, CAROLINE COUNTY, VIRGINIA
SUBCAMP 10, DAVIS CAMP
TROOPSITES

PROJ. DATE: _____
 REVISION DATE: _____



PHYSICAL ARRANGEMENTS
 BOY SCOUTS OF AMERICA
 1325 W. WALNUT HILL LN
 IRVING, TX, 75015-2079

STUDY BY: _____
 DRAWN BY: _____
 CHECKED BY: _____
 SCALE: 1" = 100'

BOY SCOUTS OF AMERICA
 ENGINEERING SERVICE

ISSUED: 9/11/09
SUBCAMP 10